



Retractable Wave Shade

PRODUCT GUIDE

^{NZ} Custom
Shade



Wave Shade Retractable Shade Cover

The Wave Shade is a custom-made retractable system with elegant billows that lets you enjoy sun or shade whenever you choose. Built in New Zealand from premium materials with anodized aluminium parts and stainless steel fixings, it's sleek, durable and easy to operate. Wave Shades run on tensioned cables and are designed to fit pergolas, decks, gazebos and more, offering a stylish, versatile solution unlike anything else on the market.

KEY BENEFITS:

- Retractable billow design
- Sun or shade control
- Sleek, modern style
- Premium NZ-made quality
- Durable aluminium parts
- Polished stainless fixings
- Fits any outdoor space
- Easy to extend/retract

Customising your Wave Shade

Creating the perfect outdoor area starts with shade that adapts to the way you live. With the Wave Shade retractable system you can customise the size, layout and look to suit your space, from pergolas and decks to gazebos and more. Here's how to design shade that works for you:

1 START WITH YOUR SPACE

- Wave Shades can be fitted to existing pergolas, gazebos, decks, outdoor framework, timber beams, structures, posts and houses.
- Measure the full dimensions for shade coverage and plan fixing point locations.
- Consider sun direction, wind exposure and daily use.

2 FABRIC COLOUR

- Commercial-grade Soltis Lounge 96 fabric is available in a full range of colour options (See page 9).
- Choose a color scheme that fits with your aesthetic, generally light colours brighten; dark shades reduce glare.

3 OPERATION (See explainer videos on our website)

- **Manual Pole Retraction** comprises of an aluminium pole and a stainless steel cleat on the front spar of the Wave Shade. The pole hooks to the cleat to manually retract back and forth.
- **Cord Retraction** operates on a stainless steel pulley and a polyester braid. It works like a blind, pulling one side of the cord loop to retract and the other way to extend it; this system allows customers to lock it off halfway open, pole retraction does not.

4 SIZE & ARRANGEMENT

- **Arrangement** – Each Wave Shade unit gives a maximum coverage of 15m² If you are covering a large area, it is better to have multiple units or two side by side to cover the space.
- **Billows** - Choose how much billow the shade has, and how low the billows hang when open and retracted.



Choosing your Location

Choosing the right spot for your Wave Shade comes down to your main goals:

creating sun protection, adding comfort to outdoor living or keeping spaces cooler. To get the most from your shade, think about orientation, local weather conditions, and the setup of your outdoor space, pergola, deck or gazebo.

FOR MAXIMUM SHADE AND COOLING

- **North-facing decks and patios:** This is the ideal spot for a Wave Shade for most of the day. A north-facing shade will provide consistent shade throughout the day and reduce heat in adjacent rooms.
- **West-facing areas:** A Wave Shade here is most effective for blocking intense afternoon and evening sun, making it perfect for late-day use and protecting your indoor space from evening glare and heat.
- **East-facing areas:** This placement provides shade during the morning, which is beneficial for breakfast on the deck or keeping morning sun out of bedrooms.

LIFESTYLE AND FUNCTION

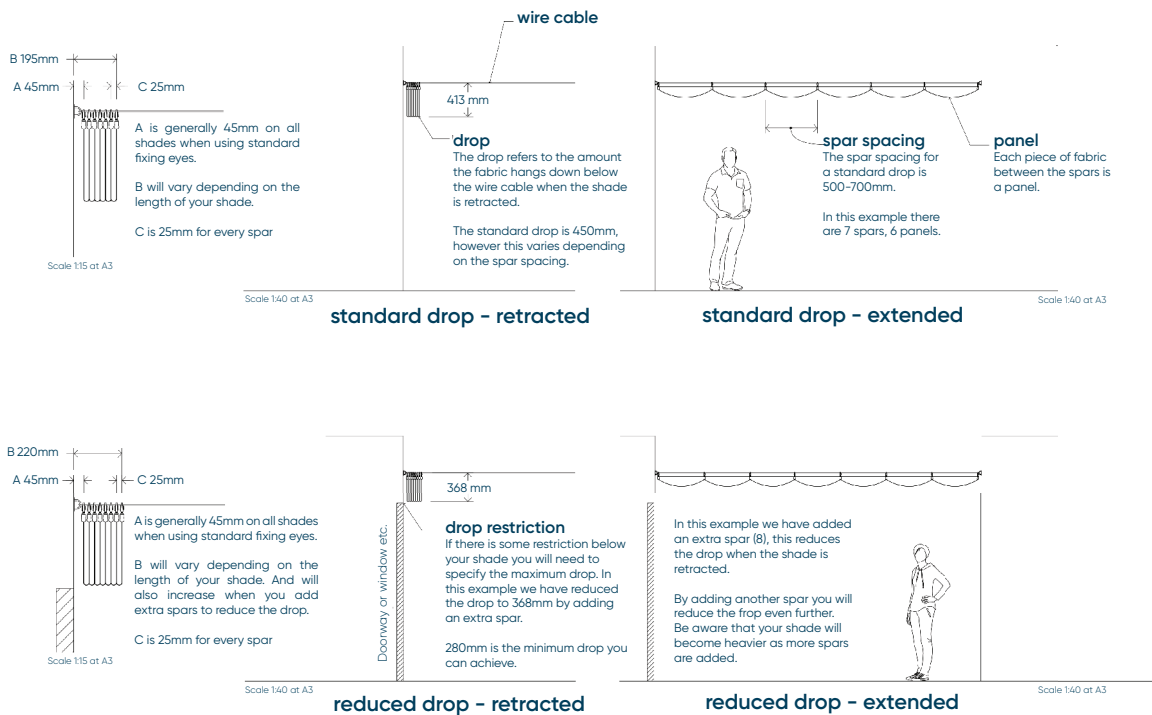
- **Over decks and patios:** This is the most common use, extending your living space for dining, entertaining, or relaxing while staying out of the elements.
- **Existing structures:** The Wave Shade's simple wire-cable system makes it ideal for pre-existing outdoor areas such as pergolas, gazebos, decks and other timber-framed spaces. For the best installation, the cables must be pulled tight, so it's important that the existing structure is strong and secure.
- **Mounting to a house:** Fixing a Wave Shade to an external wall is common and straight-forward but your home's structure must be strong enough to support the load and tension. If you are unsure a professional builder or handyman can advise the best option for your home.

LOCAL WEATHER CONDITIONS

- **Wind exposure:** Wave Shades are designed for daily use only, not for permanent outdoor shade. It is important that the shade is retracted when not in use. The Wave Shade can handle light to medium winds however for safety it should be fully retracted or removed in winds exceeding 32kph.

HEIGHT AND CLEARANCE

- Height and Drop:** Along with the overall size of your Wave Shade, it's important to consider the height from ground level. Make sure there is enough headroom when the shade is operated. When a Wave Shade is retracted, the "drop" is the measurement from the wire cable to the bottom of the billow. This measurement is important to consider, especially if the shade will be retracting over a window or door.
- Clearance:** Ensure there is enough unobstructed space for installation and operation. Check for any vents, exterior lights, downpipes, or other architectural features that could be in the way.
- Drop Options: The Wave Shade drop is available in 2 options:**
 - Standard Drop:** The fabric drop or the amount of fabric that hangs down below the cable when the shade is retracted is 450mm.
 - Reduced Drop:** If there are obstructions that will impact the shade when retracted such as a doorways and windows there is a 'Reduced Drop' option. The fabric drop that hangs down below the cable when the shade is retracted is with the reduced option is 368mm. (See diagram below for more information).



How to Decide

- 1 Assess your needs:** Decide what your main goal is—maximum all-day shade, afternoon cooling, or protection for a specific area.
- 2 Monitor your space:** Observe how the sun and wind affect your potential awning locations at different times of the day.
- 3 Ask for help:** If you have any questions or need to talk to us. NZ Custom Shade representatives are available via at sales@nzcusomshade.co.nz



Measuring for Your Wave Shade

Before placing an order for your custom Wave Shade it is important to plan and measure your space carefully to ensure a good fit and easy installation. If you are unsure we recommend employing a local builder / handyman to assist.

Before you Measure

Accurate measurements cannot be taken until the attachment points, such as eye plates, eye bolts and poles, are in place. Once the attachment points are fitted, measurements in millimeters (mm) from point to point are required to place your order.

Designing your Shade

Space Dimensions

Before you begin, you must first securely attach your fixing points. Only then can you take the final measurements from each point. Make sure this space is clear of architectural features like vents, downspouts, or lights, and consider both the functional and aesthetic aspects of the final design.

Maximum Width

The maximum width for a single Wave Shade unit is 3m. If your area is wider than this, you can use multiple units side-by-side. For example, to cover a 4m wide area, you could use two 2m units. If you are unsure of the best arrangement, please contact us at sales@nzcusomshade.co.nz

Cables

The number of cables you need depends on the number of units required to cover your space. Each Wave Shade unit travels on stainless steel wire cables. These cables are installed first, and the shade is then clipped onto them. The installation instructions provide detailed steps for attaching the cables and tensioning them to ensure the shade travels smoothly.

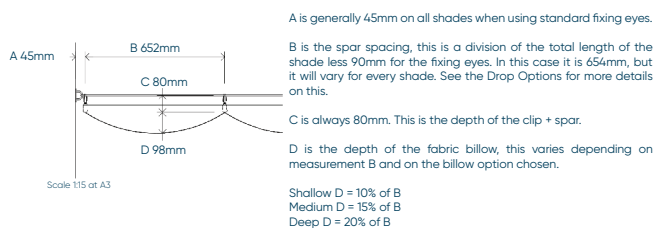
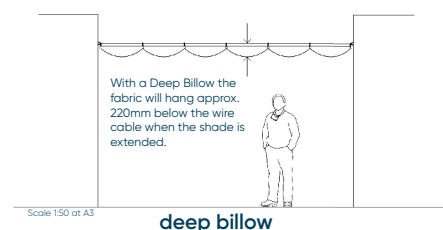
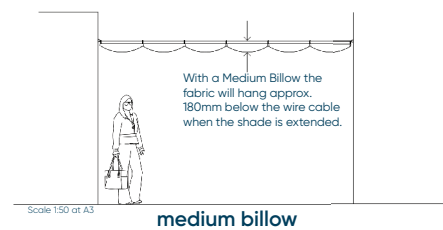
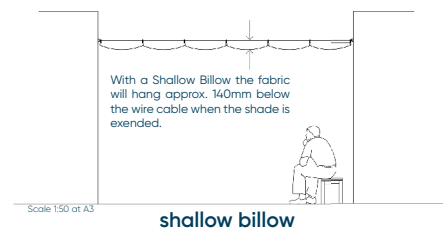
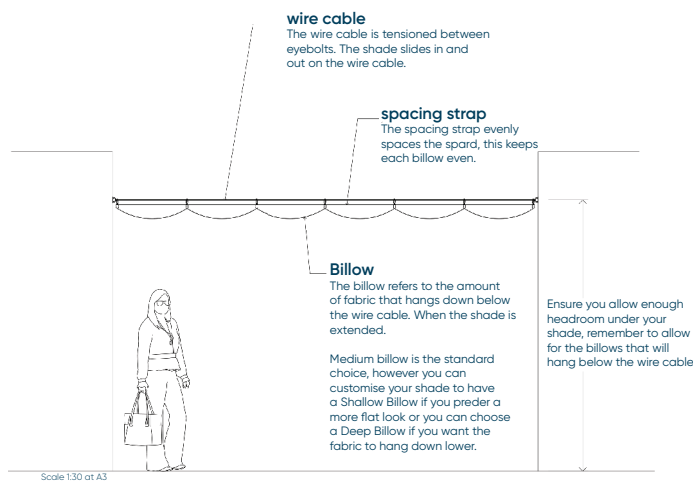
Which way the Wave Shade will travel?

The direction the Wave Shade travels is determined by its retraction system. The shade is designed to move back and forth along the stainless steel wire cables. You have two main options for operation:

- **Pole Retraction:** A system where a pole is used to manually push the shade out or pull it back in.
- **Integrated Cord:** This system works like a blind, using a pulley and cord to extend and retract the shade.

Choosing Billow Size

The “billow” is the natural, wave-like drape of the fabric. You can choose from three options: **low, medium or deep billow**. This is a customizable feature that is a matter of personal preference and style. (See digram below for more information).



Fabric Drop Options

When a Wave Shade is retracted, the “drop” is the measurement from the wire cable to the bottom of the billow.

- **Standard Drop:** The fabric drop or the amount of fabric that hangs down below the cable when the shade is retracted is 450mm.
- **Reduced Drop:** If there are obstructions that will impact the shade when retracted such as a doorways and windows there is a ‘Reduced Drop’ option. The fabric drop that hangs down below the cable when the shade is retracted is with the reduced option is 368mm. (See diagram on page 5 for more information).



Fabric - Soltis Lounge 96

All Wave Shade systems are made from premium, commercial-grade Soltis Lounge 96 fabric. This superior material provides the ultimate in UV protection for you and your family.

Serge Ferrari - Soltis Lounge 96

SUPERIOR UV PROTECTION

The Soltis Lounge 96 fabric provides excellent protection from the sun's harmful effects. Its micro-perforated design is engineered to filter and manage solar energy, blocking up to 85% of UV rays. While effectively protecting from solar radiation, the fabric's open nature reduces glare and allows natural light to pass through, ensuring you can still enjoy a clear view of the outdoors without being exposed to harsh sunlight.

UNMATCHED DURABILITY

The fabric's exceptional durability is thanks to Serge Ferrari's exclusive Précontraint® technology. This process keeps the material under tension during manufacturing, giving it a high degree of dimensional stability and resistance to tearing and stretching. The PVC-coated polyester is resistant to mold, mildew and dirt, it is backed by a 5-year warranty.

AESTHETIC AND FUNCTIONAL DESIGN

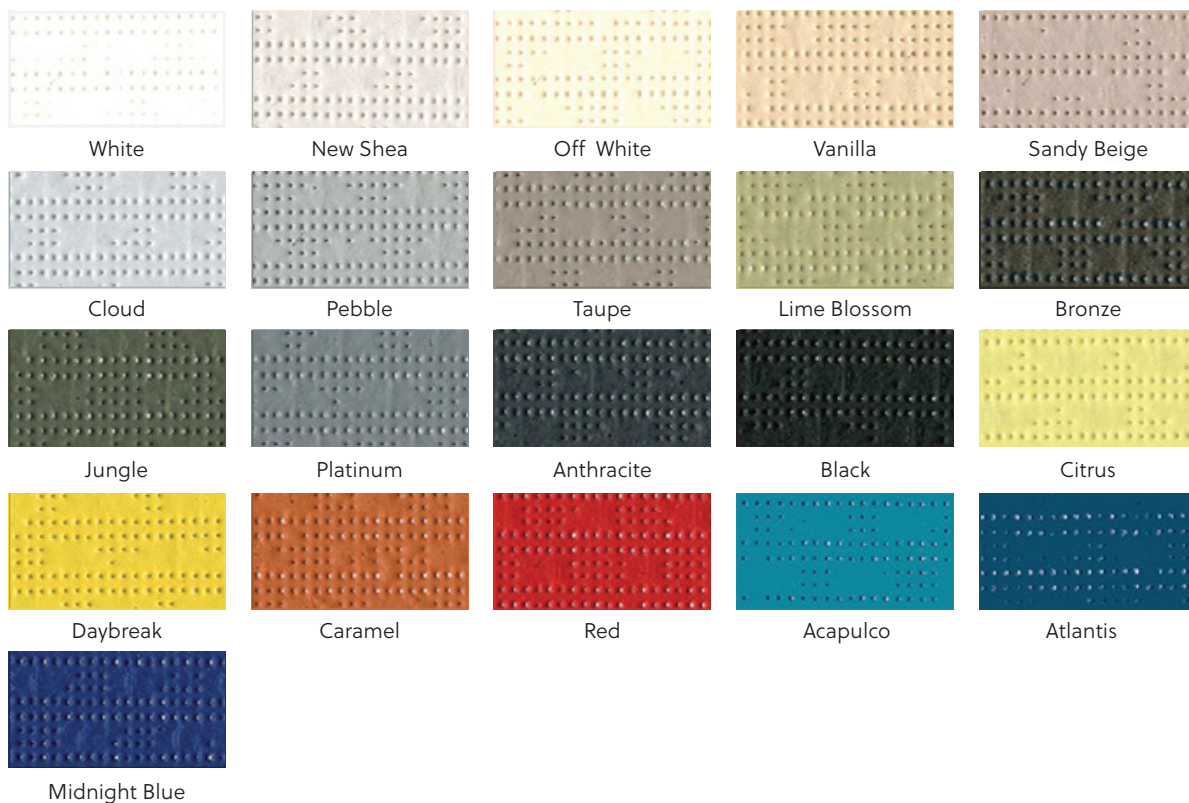
Soltis Lounge 96 is designed to create a comfortable and stylish outdoor environment. Its unique micro-perforated structure allows for natural air circulation, which helps to dissipate heat and prevent the "greenhouse effect" often experienced under solid fabrics. This provides a refreshing, tree-like shade. The fabric is thin and lightweight, yet robust, offering a clean, modern look.

TECHICAL INFORMATION

Warranty	5 years
Shade Factor	up to 85%
Openess Factor	4%
Weight	400g/m ²
Roll Width	120cm - 267cm
Roll Length	40 lm
Breaking Strength (warp/weft)	220/200 daN/5cm
Tearing Strength (warp/weft)	30/25 daN
Flame Retardancy	M2/NFP 92-507, M2/UNE 23.727-90, G1/GOST.30244.94

COLOURS

This premium fabric comes in a wide range of timeless and contemporary colours, with more than 20 options available. The palette includes a variety of neutral shades such as whites, beiges, and greys, as well as brighter, more vibrant tones. The pigments used are highly resistant to UV rays, ensuring long-term colour-fastness. Additionally, the fabric is colour-matched on both the front and back for a seamless and high-quality aesthetic from any angle.





Flexible Retraction

The Wave Shade is designed to give you total control over your outdoor comfort. With two smart retraction systems to choose from, pole retraction and cord retraction you can select the style that best suits your space, lifestyle, and ease of use.

Pole Retraction System

See a video of this system in action on our website

SIMPLE AND RELIABLE

The pole retraction system uses a hook-and-pole method, letting you slide the fabric billows into position by hand. It's a straightforward way to open or close your Wave Shade without the need for extra fittings.

With pole retraction, a Wave Shade can't be locked off partway — it's designed to be either fully open or fully closed, as the fabric won't stay tensioned if stopped in between.

BUDGET-FRIENDLY CHOICE

With fewer moving parts and a simpler setup, the pole system is typically the most cost-effective option — offering reliable performance with minimal maintenance.

KEY BENEFITS

- Easy manual operation
- No pulleys or cords required
- Quick to extend or retract
- Lower cost option
- Reliable for everyday use

Cord Retraction System

See a video of this system in action on our website

SMOOTH AND CONTROLLED

The cord retraction system provides a more controlled and streamlined way to extend and retract the Wave Shade. With an integrated pulley and cord, you can open or close the shade with minimal effort, making it ideal for larger or frequently used spaces.

FLEXIBLE POSITIONING

Unlike the pole option, the cord system allows you to lock the shade at any point — fully open, fully closed, or part way. A cleat or locking device secures the cord, giving you precise control over the amount of shade at any time.

PERFECT FOR LARGER INSTALLS

If your Wave Shade covers a wide span or is in a high-traffic outdoor area, the cord system offers the convenience and smooth handling needed for easy daily use.

KEY BENEFITS

- Easy cord-and-pulley operation
- Can lock shade at any position
- Smooth control for larger spans
- Minimal physical effort required
- Great for frequent adjustments

Choosing the Right Option

Both retraction systems deliver the same premium Wave Shade look and quality, but they suit different needs. The **pole system** is the simplest and most affordable, making it ideal for everyday use in smaller outdoor spaces where quick adjustments are all that's needed. The **cord system** offers greater flexibility, smoother handling, and the ability to lock the shade at any position — perfect for larger installations or spaces where you want precise control.

Whichever option you choose, you'll enjoy a sleek, durable shade solution that's custom-made to fit your outdoor area and designed to last.

Ask for help: If you have any questions or need to talk to us. NZ Custom Shade representatives are available via at sales@nzcusomshade.co.nz

Care Instructions

To get the most out of your Wave Shade and make it last for a very long time, follow these guidelines.

DAILY USE

Wave Shades are designed for daily use only, not for permanent outdoor shade. So, remember to extend it only while you require shade, and when not in use always retract it away. Your Wave Shade can handle light to medium winds however never extend it during winds exceeding 32kph (20mph).

To keep your Wave Shade safe during storms you can take either of the following steps:

- A. Remove it before the storm arrives.
- B. Retract your shade and lock off the cord securely to keep

REMOVING YOUR SHADE

To remove your shade for storing and cleaning, you can do this yourself if you have the competence and equipment or by your local authorized Wave Shade installer. To do this simply unclip the shade from the wire cables and carefully lay it on a clean, flat, non-abrasive surface.

Note: if your wave shade has a cord retraction kit you will need to remove the bolt that attaches the cord to the aluminum spar first, using an allen key. Take note of which way the shade is orientated and exactly where the bolt was so that you can reinstall properly after storage. The wire cables and cord retraction setup can also be removed too if you are confident to do this yourself. Remember when you are reinstalling the wire cable again, it needs to be super tight!

STORAGE INSTRUCTIONS

If you do not require shade during the cooler season it is best your Wave Shade is removed and stored away during the worst winter months. This protects it from rain, hail, snow, high winds and weather that could damage or reduce the life of your shade. It is best to lay out a clean piece of fabric, plastic film, builders paper or the likes and wrap the neatly folded-together Wave Shade. Avoid creases in the fabric where ever possible and ensure that the shade is dry before storing. If you decide to remove the wire cable, coil this into a plastic bag or cardboard box to store with the shade. Store your wrapped Wave Shade in a dry ventilated place away from excessive heat.

CLEANING INSTRUCTIONS

Your Wave Shade must be cleaned at least once every year to comply with the warranty requirements. To keep it looking smart we recommend cleaning it at least twice a year. In coastal areas where your stainless steel is exposed to salt air, or installed under a cover you will need to thoroughly clean all the stainless steel parts at least every 4 months to prevent staining. If your Wave Shade becomes stained or visibly dirty it is best to clean it as soon as possible to prevent permanent discoloration.

When safe and accessible you can clean your Wave Shade in-situ or remove it and lay it on a clean, flat, non abrasive surface. Using a solution of one-cup mild detergent with one cup of household bleach in 11 liters of water, sponge both sides of the fabric and all other components. Immediately rinse thoroughly with water and air-dry completely. Do not use any abrasive cleaners.

GENERAL MAINTENANCE

To keep your Wave Shade in good working order the wire cables need to be greased at least twice per season. This reduces the friction and ensures that the shade will extend and retract easily. If you do notice it becoming a little more difficult to extend and retract, then more than likely it is time to grease the wire cables. Using appropriate height access equipment, apply Premium Wave Shade Grease by hand, paintbrush or rag to the wire cables where the hooks slide. Apply liberally and remove any excess with a rag. Otherwise just check for general wear and tear on all moving parts and ask your supplier about any needed replacement parts or warranty in the unlikely event of a failure.

Warranty

12 Month Warranty

NZ Custom Shade Ltd ("The Supplier") warrants the integrity of the workmanship of your Wave Shade product/s ("The Product") and will remedy any defects arising from workmanship or materials used in the manufacture of the product on the basis of the conditions set out in the conditions of warranty below.

1. NZ Custom Shade warrants your Wave Shade to be free from defects in material and workmanship. This warranty is extended to the first retail purchaser of the Wave Shade for consumer use, and lasts for the specified warranty period from date of purchase.
2. The warranty covers the replacement of any Wave Shade that is defective (unless those defects result from: altering or modifying of the Wave Shade, improper use, abuse or misuse of the Wave Shade, such as incorrect installation, or damage caused by high winds or heat).
3. This warranty does not cover colour fading of the fabric due to exposure to ultra-violet rays, damage to the Wave Shade due to exposure to chemicals, placement near open flame or other heat source. NZ Custom Shade will not have other or greater liability for defects in the Wave Shade. Nor will NZ Custom Shade have any liability for incidental or consequential damages.
4. If you discover a defect in the Wave Shade during the warranty period and wish to obtain a replacement, please return the Wave Shade to the place of purchase (or provide photographic evidence of the defect) within 90 days of the defect warranted against along with a copy of the original invoice and a written description of the claimed defect. All implied warranties of merchantability and fitness for particular purpose are limited in duration to the specified warranty period from date of purchase.
5. Except those warranties or conditions implied by law, NZ Custom Shade will not be liable for any loss or damage suffered by any person (including the purchaser of the product) in any way relating to or arising from the Wave Shade or its use (including loss or damage arising from the negligence of, or contributed to by, NZ Custom Shade).
6. Please note that with some Wave Shade products, joins or seams are necessary due to available fabric widths. Our manufacturers are trained to minimise seams; however, some seams are inevitable and will be visible. This is quite normal, should be expected and is not covered by this warranty.